

Printing and Assembling the Mole Diagram Activity

Print the files using a color printer:

1. Print the diagram and place it in a sheet protector. This is the diagram that you will pin to the cork board or carpet square so that students can attach the labels using map tacks.
2. Print the answer sheet and place it in a sheet protector. This is the first part of your "control" or "answer key."
3. Print 2 copies of the definitions and labels on colored paper.
4. Place 1 copy in a sheet protector. This is the second part of your "answer key."
5. The second sheet will be the labels and items that will become the game pieces. If they are the same color as the answer sheet, it will be easier to keep track of the pieces.

Assembling the activity:

1. Laminate the second definitions sheet..
2. Cut the pieces apart and put them in snack size zip-lock bags.
 - Bag 1 - Names of the parts of the mole
 - Bag 2 - Descriptions of the parts of the mole
 - Bag 3 - Numbers of the parts of the mole (These match the numbers on the diagram, thus giving the location of the part.)
 - Bag 4 - Labels for the mole parts (small rectangles with names)
3. Store the entire activity, 3 sheets in sheet protectors and 4 zip-lock bags, in a pocket file folder, preferably the same color as the paper you used for printing the definitions.

Using the Mole Diagram Activity

In this activity, some of the parts and definitions may not be familiar to you. This is an activity that you can have fun learning with your students.

The game may be played with 1 - 4 players as indicated below. If there are fewer than four students, simply skip some of the parts, or have a student perform more than one function.

Player 1 - Teacher - Control diagram and definition sheets.

Player 2 - Labels for parts, diagram pinned onto a cork message board; map pins (optional)

Player 3 - Descriptions for the parts

Player 4 - Numbers for location of the parts and the names of the parts.

Presentation:

1. Teacher reads the first description, and asks someone to name it.
2. If no one can name it, then s/he does. Player 2 and Player 4 find the correct labels.
3. Player 2 finds the correct place on the diagram and places it there, pinning it if desired.
4. Player 4 matches the number and the name and places them in order in front of him.
5. Player 3 finds the description and places it beside the number and name that Player 4 has laid out.

The Mole

Parts – Definitions and Labels

1	tail	This appendage is long and strong.
2	sensory whiskers	These, along with sensory bumps on its snout and sensory hairs on its tail, give the mole its sense of touch.
3	fur	This covering insulates the mole against temperature extremes.
4	feet	The mole uses these appendages for burrowing and for catching food.
5	mouth	Located under the mole's snout, it contains sharp, pointed teeth
6	eye	These organs of sight are almost useless. Moles are virtually blind.
7	snout	This sensitive part of the mole helps it search for its food.
8	ear	Although moles have these sensory organs, they do not have very good hearing.

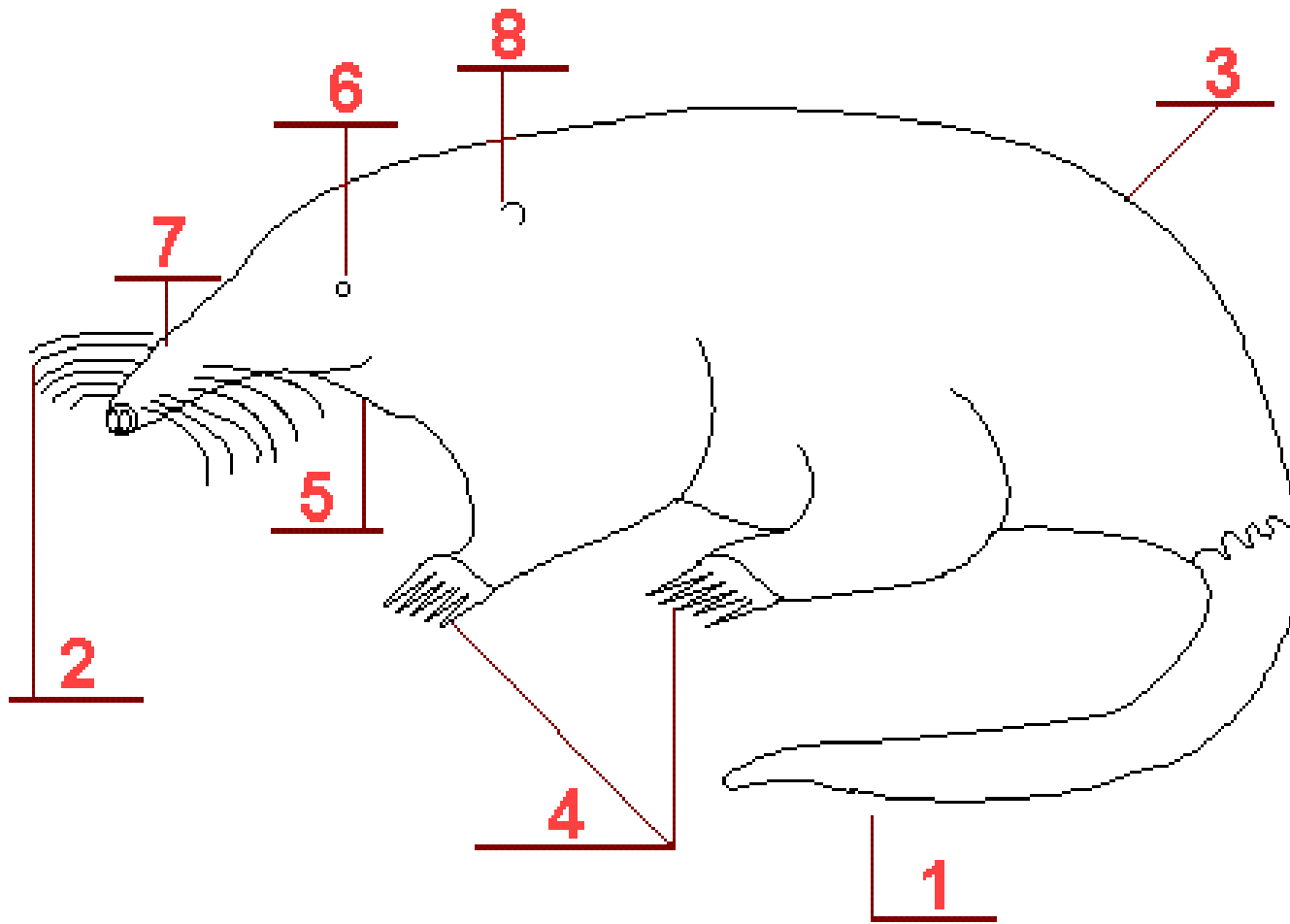
fur	feet	mouth	snout	eye
snout	tail	sensory whiskers		ear

fur	feet	mouth	snout	eye
snout	tail	sensory whiskers		ear

fur	feet	mouth	snout	eye
snout	tail	sensory whiskers		ear

fur	feet	mouth	snout	eye
snout	tail	sensory whiskers		ear

The Mole



The Mole Answer Sheet

